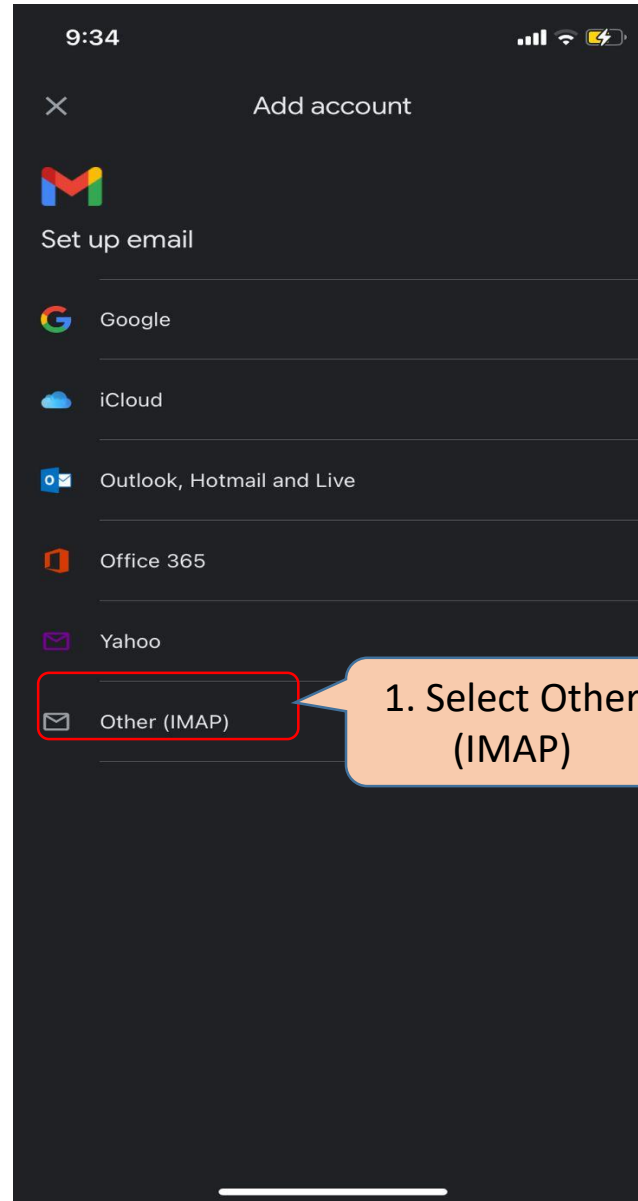


How to configure your Zimbra email on Gmail Client (Apple Devise)

Select ADD another account on Gmail & Select IMAP.



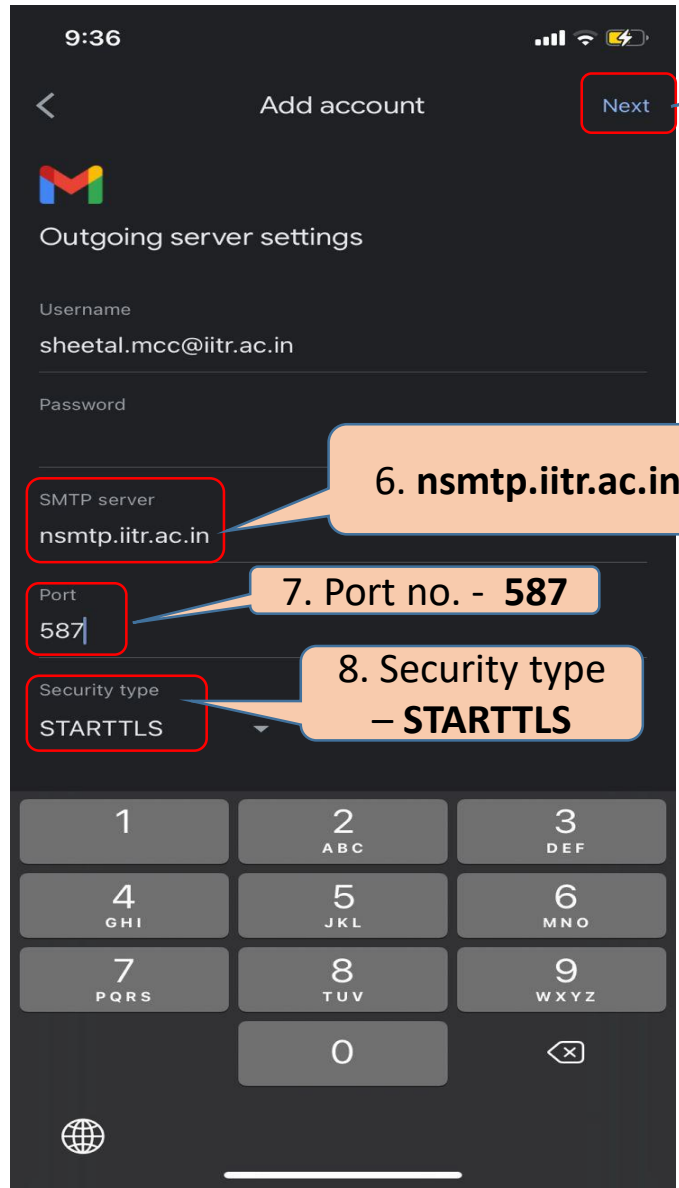


5. Select **Next**

2. **mapi.iitr.ac.in**

3. Port no. - **993**

4. Security type
– **SSL/TLS**

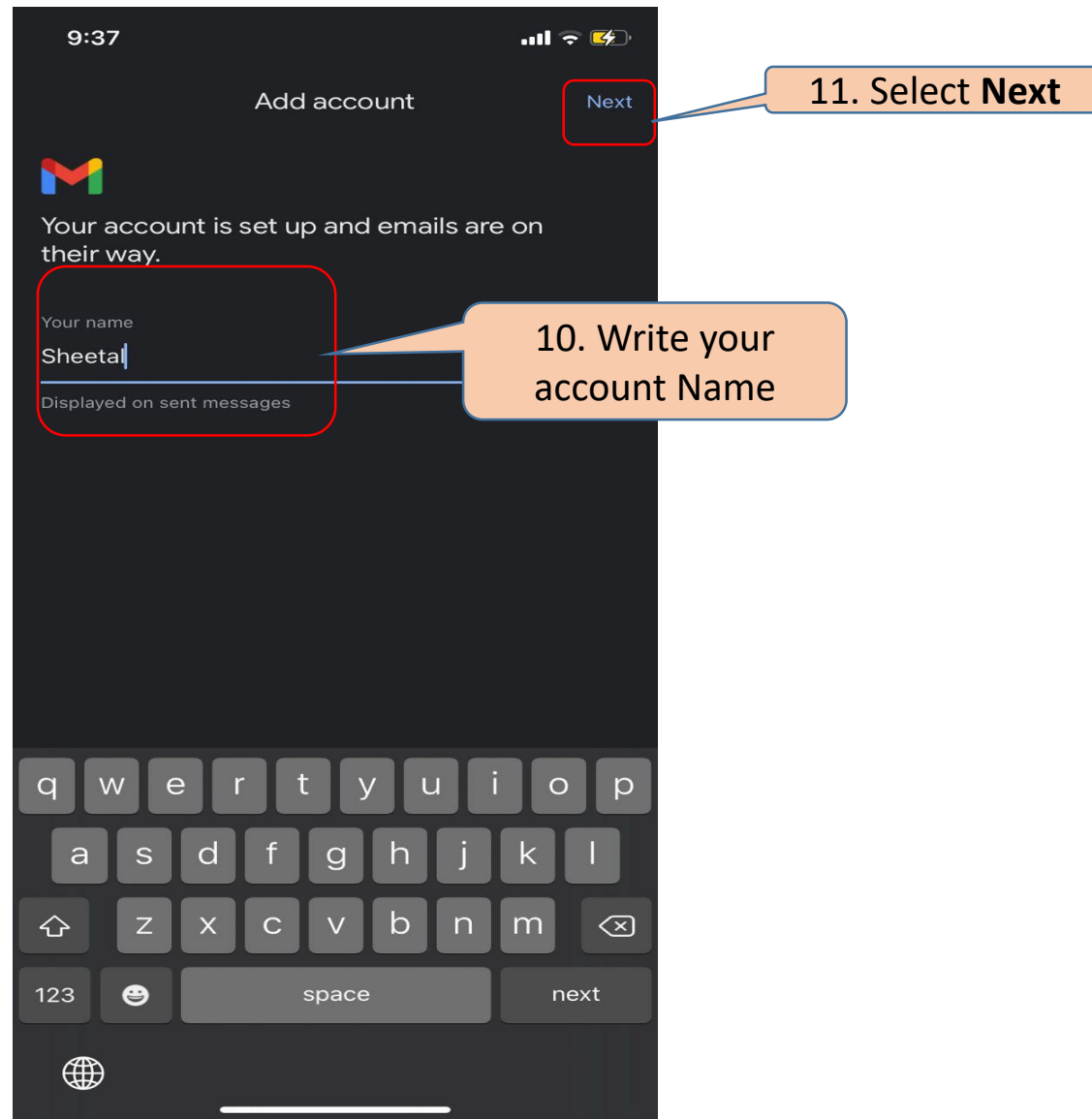


9. Select Next

6. nsmtp.iitr.ac.in

7. Port no. - 587

8. Security type - STARTTLS



After this setting, you will arrive at your emails.